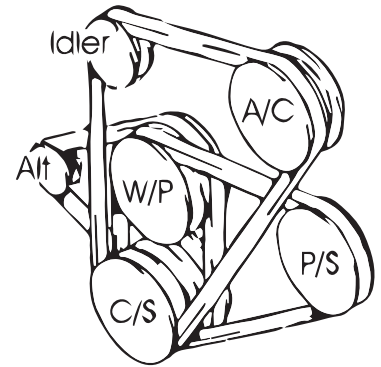
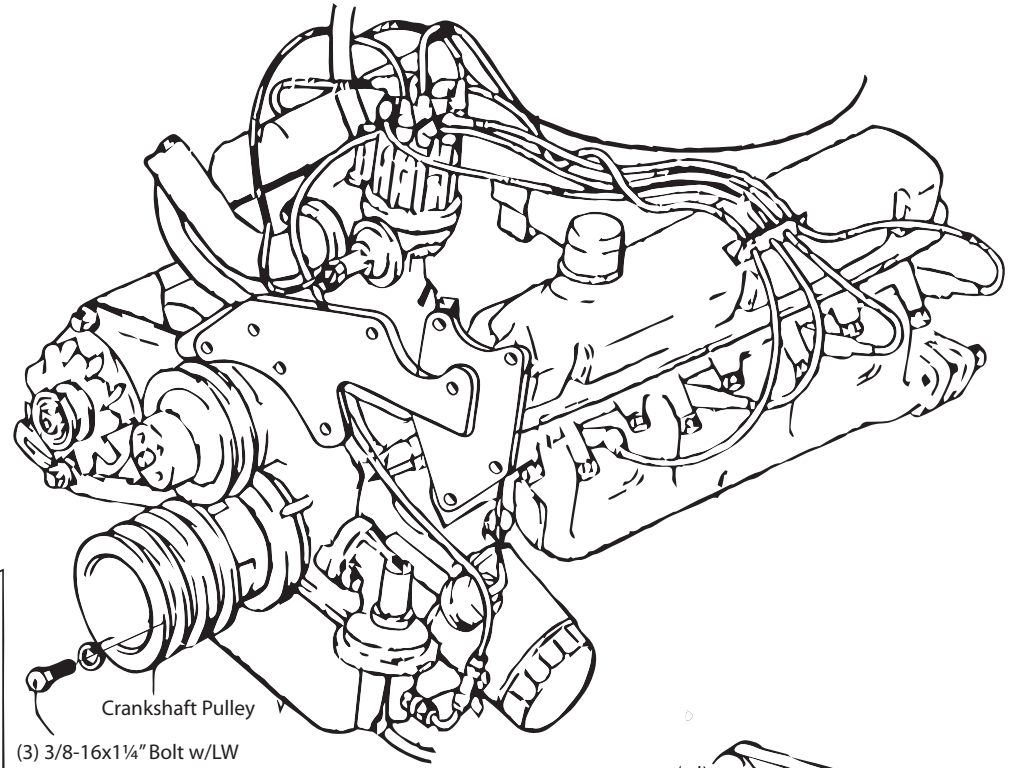
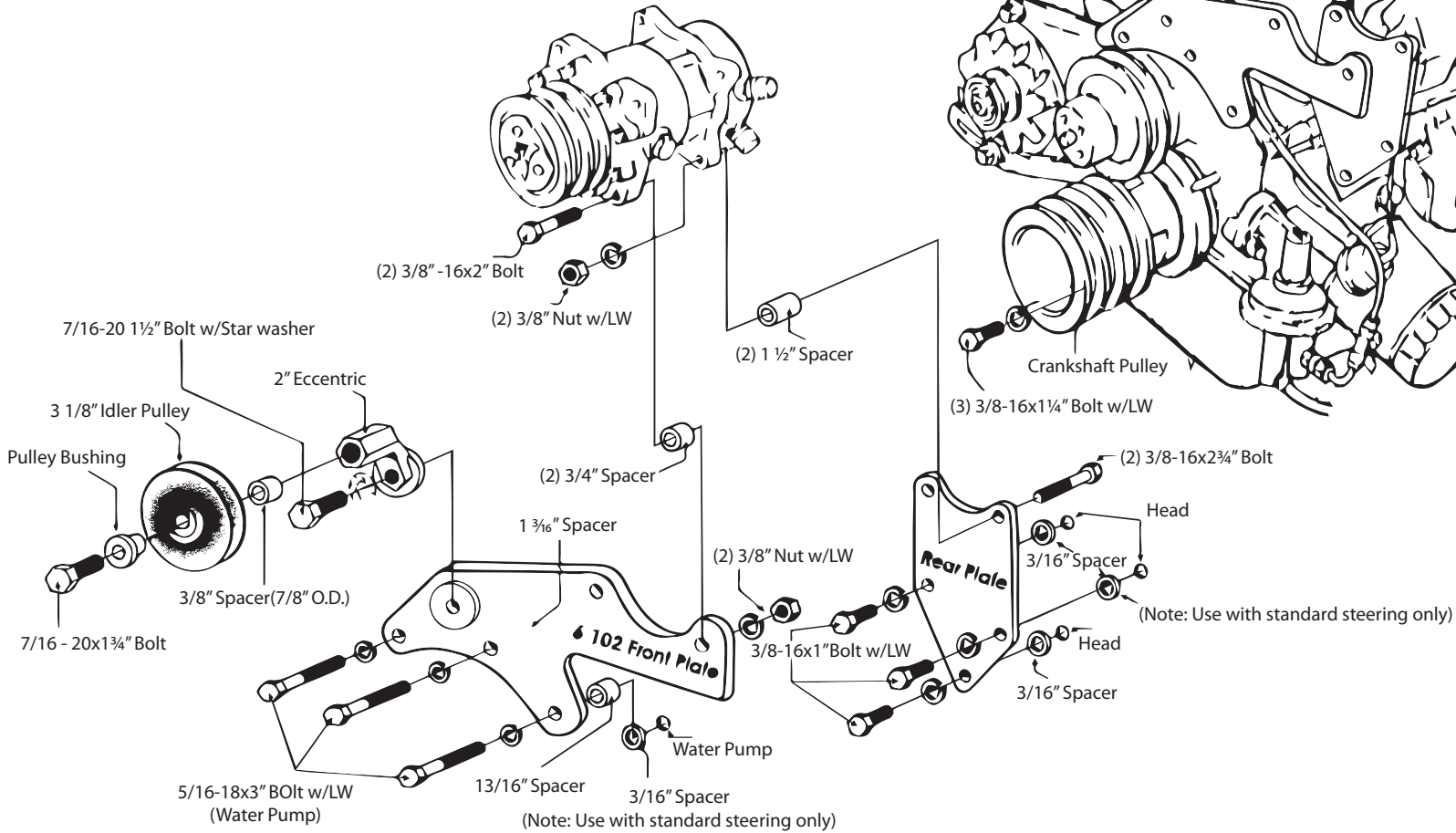




Classic Auto Air Mfg.
Part# 6-102



Note: Use 508 Sanden Compressor Or Diesel KIKI Compressor with 5/4" Clutch
Note: Use 51015 Belt (51" 4L Belt)

FORD MUSTANG V-8 289-302 C.I.D.
WITH OR WITHOUT POWER STEERING

Installation Instructions 6-102

1. Remove and retain engine fan pulley and belts.
2. Remove crankshaft pulley and replace with crankshaft pulley provided in kit.
Mount with (3) $\frac{3}{8}$ " x $1\frac{1}{4}$ " bolts and lockwashers.
3. Follow the installation schematic on the reverse side of this page and attach (6-102) compressor mount to engine using the bolts and spacers provided in (6-102) hardware kit. (Check schematic for spacers without power steering.)
4. Attach A/C compressor to mount using bolts and spacers provided in (6-102) hardware kit.
5. Thread $\frac{7}{16}$ bolt with star washer through eccentric before attaching to (6-102) Front plate. Attach idler pulley to eccentric using pulley bushing, bolt and pulley spacer.
6. Replace engine fan and pulley.
7. Install belts as shown on schematic (belt routing). Adjust to proper tension and tighten all bolts.

CAUTION: BEFORE RELEASING VEHICLE TO CUSTOMER. Check all radiator hoses. Heater Hoses. & Oil lines to be sure there is proper clearance to Compressor, Compressor Mount & Compressor Clutch.

Packing List 6-102

- 1- 6-102 Front Plate
- 1- 6-102 Rear Plate
- 1- Crankshaft Pulley
- 1- 2" Eccentric
- 1- 3- $\frac{1}{8}$ " Idler Pulley
- 1- Idler Pulley Bushing
- 3- $\frac{5}{16}$ - 18x 3" Bolt
- 3- $\frac{3}{8}$ - 16x $1\frac{1}{4}$ " Bolt
- 3- $\frac{3}{8}$ - 16x1" Bolt
- 2- $\frac{3}{8}$ - 16x2" Bolt
- 2- $\frac{3}{8}$ - 16x $2\frac{3}{4}$ " Bolt
- 1- $\frac{7}{16}$ - 20x $1\frac{1}{2}$ " Bolt
- 1- $\frac{7}{16}$ - 20x $1\frac{3}{4}$ " Bolt
- 4- $\frac{3}{8}$ - Nut
- 3- $\frac{5}{16}$ " Lockwasher
- 10- $\frac{3}{8}$ " Lockwasher
- 1- $\frac{7}{16}$ " Starwasher
- 4- $\frac{3}{16}$ " Spacer
- 1- $\frac{3}{8}$ " Pulley Spacer ($\frac{7}{8}$ " O.D.)
- 2- $\frac{3}{4}$ " Spacer
- 1- 1 $\frac{3}{16}$ " Spacer
- 1- $\frac{13}{16}$ " Spacer
- 2- 1 $\frac{1}{2}$ " Spacer