



**Classic Auto Air Mfg.**  
**Part# 6-132**

**1955-1957 Thunderbird  
Compressor Installation**



1. Remove fan shroud.
2. Drain radiator.
3. Remove upper radiator hose.
4. Remove lower hose from radiator.
5. Remove radiator.
6. Loosen and Remove power steering belt, if equipped.
7. Remove fan and fan belt pulley.
8. Remove generator and generator bracket. Do not remove upper generator bracket to water pump brace.
9. Remove heater return hose from water pump to the 45-degree fitting.
10. Adjust water pump heater fitting to engine timing cover. **See picture #6.**
11. Install A/C compressor bracket to engine timing cover. **See picture #1, remove bolts marked "A"**. Use new bolts supplied. Do not tighten bolts completely.
12. Install lower A/C bracket on top of existing old generator bracket brace to lower right water pump bolt position using new bolt supplied. **See pictures #1, 2 and 3, bolt marked "B"**.
13. Install upper front compressor brace to water pump at upper right water pump position using new bot supplied. **See pictures #5 and 6.**

14. Tighten all braces and bracket attaching bolts evenly.
15. Install generator. Do not tighten completely. If changing to alternator in place of the generator, refer to the last page of these instructions. (GM INTERNAL ALTERNATOR INSTALLATION ON T-BIRD)
16. Install compressor with service fittings parallel to the oil filter pipe. The mounting tabs on the compressor need to be reamed to 7/16". **See picture #7.**
17. Loosen front upper compressor brace at water pump and install compressor to brace bolt, supplied. Tighten both brace bolts evenly.
18. Install rear upper compressor brace to rear of compressor flange. **See picture #6.**
19. Thru rear upper compressor brace, drill cover using 3/8" drill to mark center of hole. Drill a 1" deep hole using a 5/16" drill bit. Tap with 3/8"-16NC and install bolt and lock washer, supplied. Tighten upper rear compressor brace evenly. **See picture#6.**
20. Install fan/generator (alternator) - A/C belt loosely. Gates #9470 or #9476, or similar belt.
21. Slide fan pulley into position. '57 pulley suggested due to 55-56 pulley design.
22. Install and tighten fan and fan spacer.
23. Tighten belt and secure generator.
24. Reinstall power steering belt if so equipped.
25. Reinstall heater return hose.

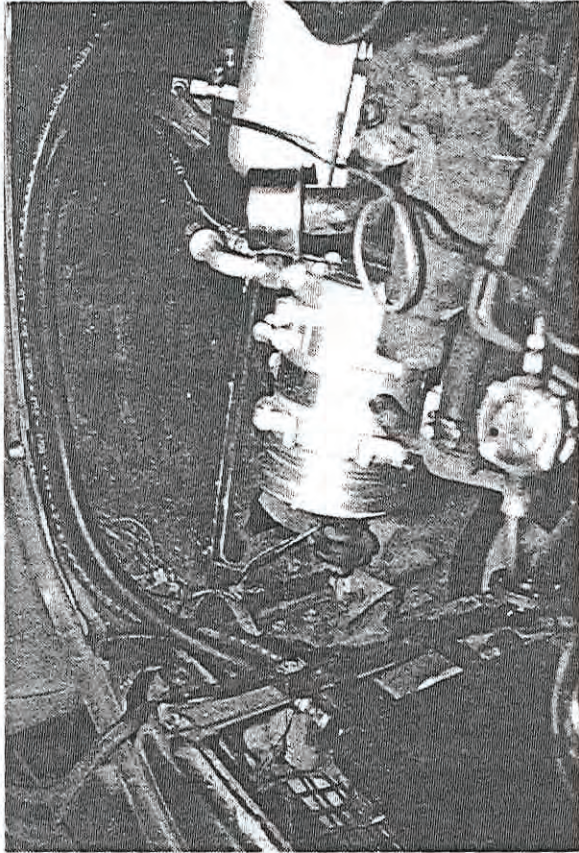
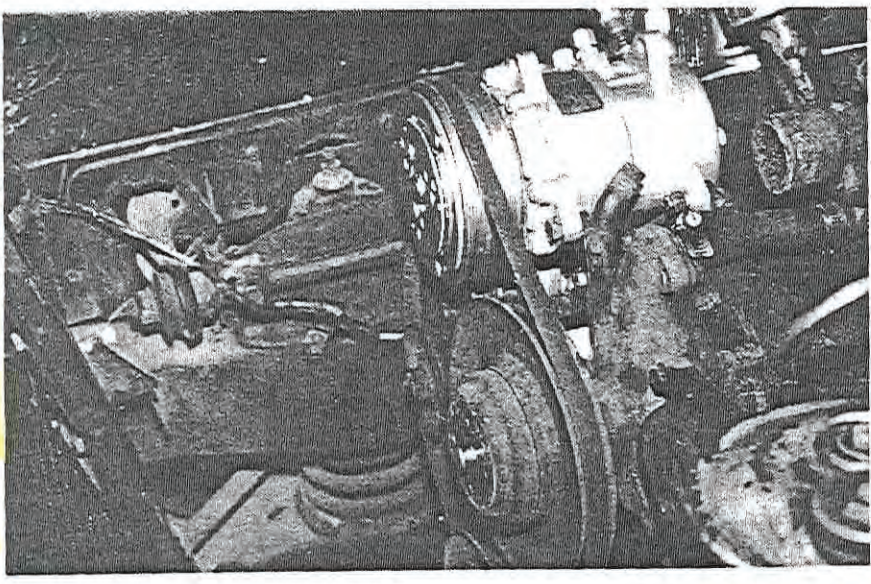
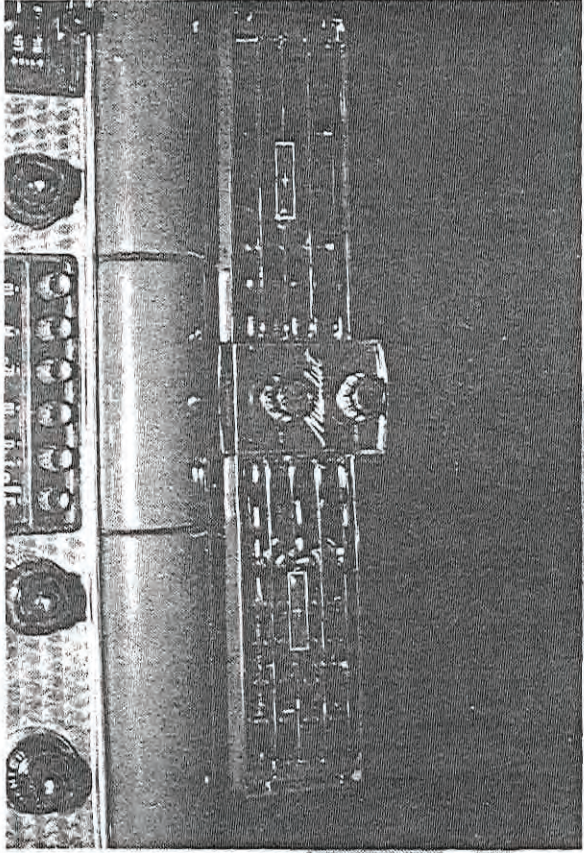
**NOTE:** Compressor is supplied with correct amount of oil. No additional oil charge is required.  
Compressor label denotes correct refrigerant to use in system.

**LH=DRIVER SIDE**  
**RH=PASSENGER SIDE**

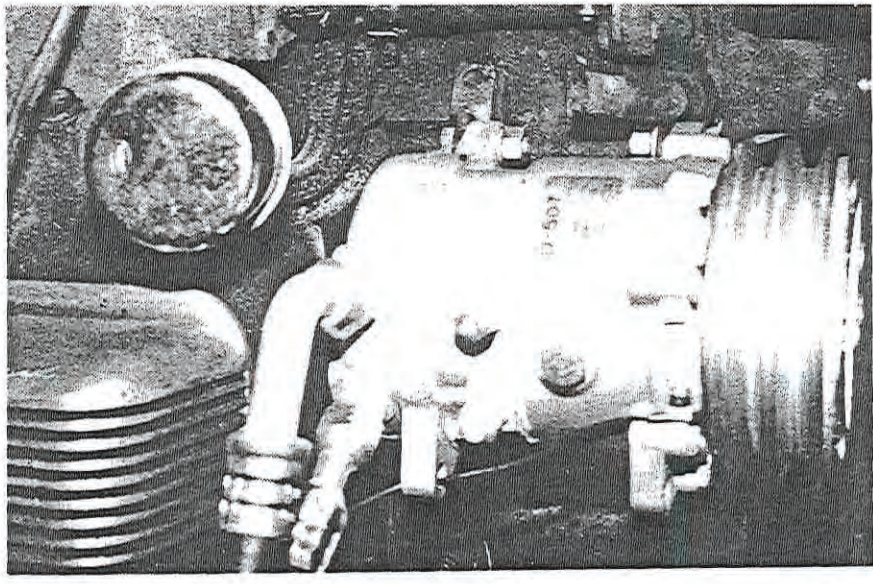


6-132

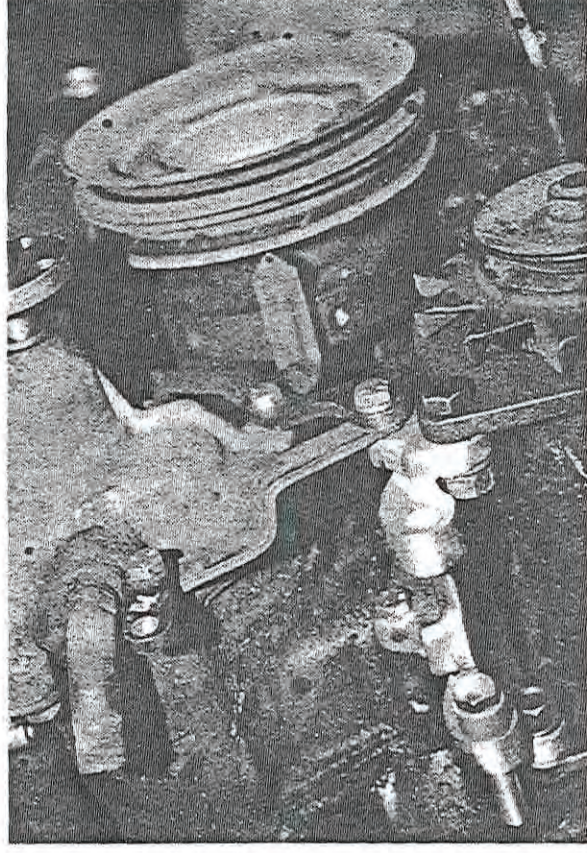
~~not~~



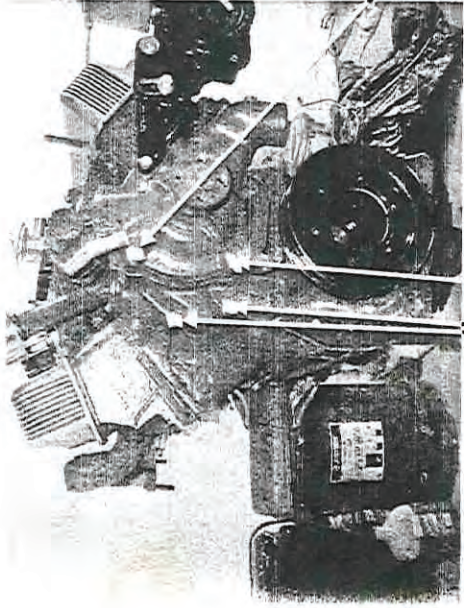
Generator only



200 Kit # T-10151-2





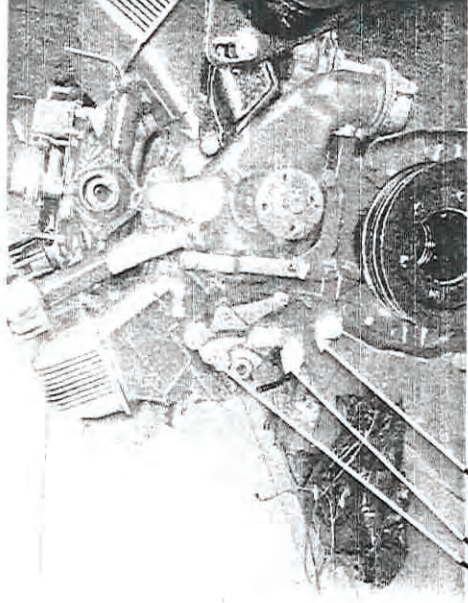


**PICTURE #1**

'C'- Upper right water pump bolt.

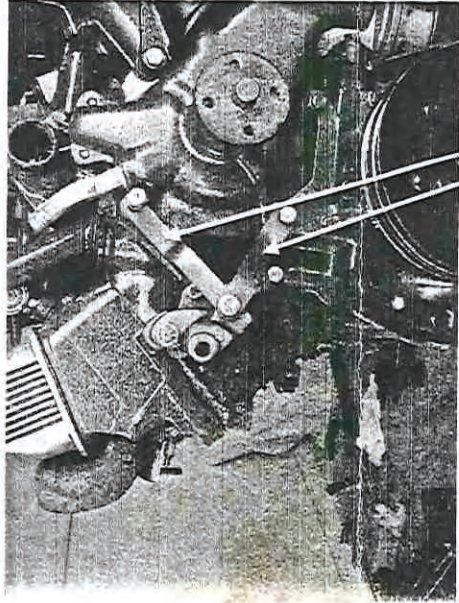
'B'- Lower right water pump bolt

'A'- Timing chain cover bolts.



**PICTURE #2**

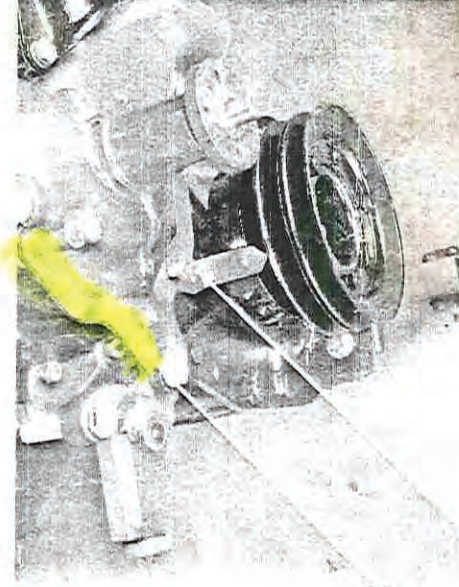
Lower A/C bracket brace.



**PICTURE #3**

Generator bracket

Lower A/C bracket brace  
to timing pointer bolt.



**PICTURE #4**



A/C compressor

Front upper compressor brace.

Rear upper compressor brace.

A/C compressor bracket.

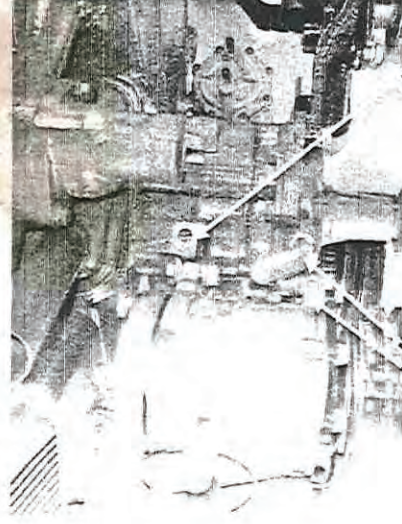
Front of Engine

**PICTURE #5**



Compressor service fittings  
parallel to oil filler pipe

**PICTURE #7**



Heater return hose will  
reconnect to this 45-degree  
fitting, turned.

Front upper compressor brace.  
Rear upper compressor brace to  
timing cover.

**PICTURE #6**