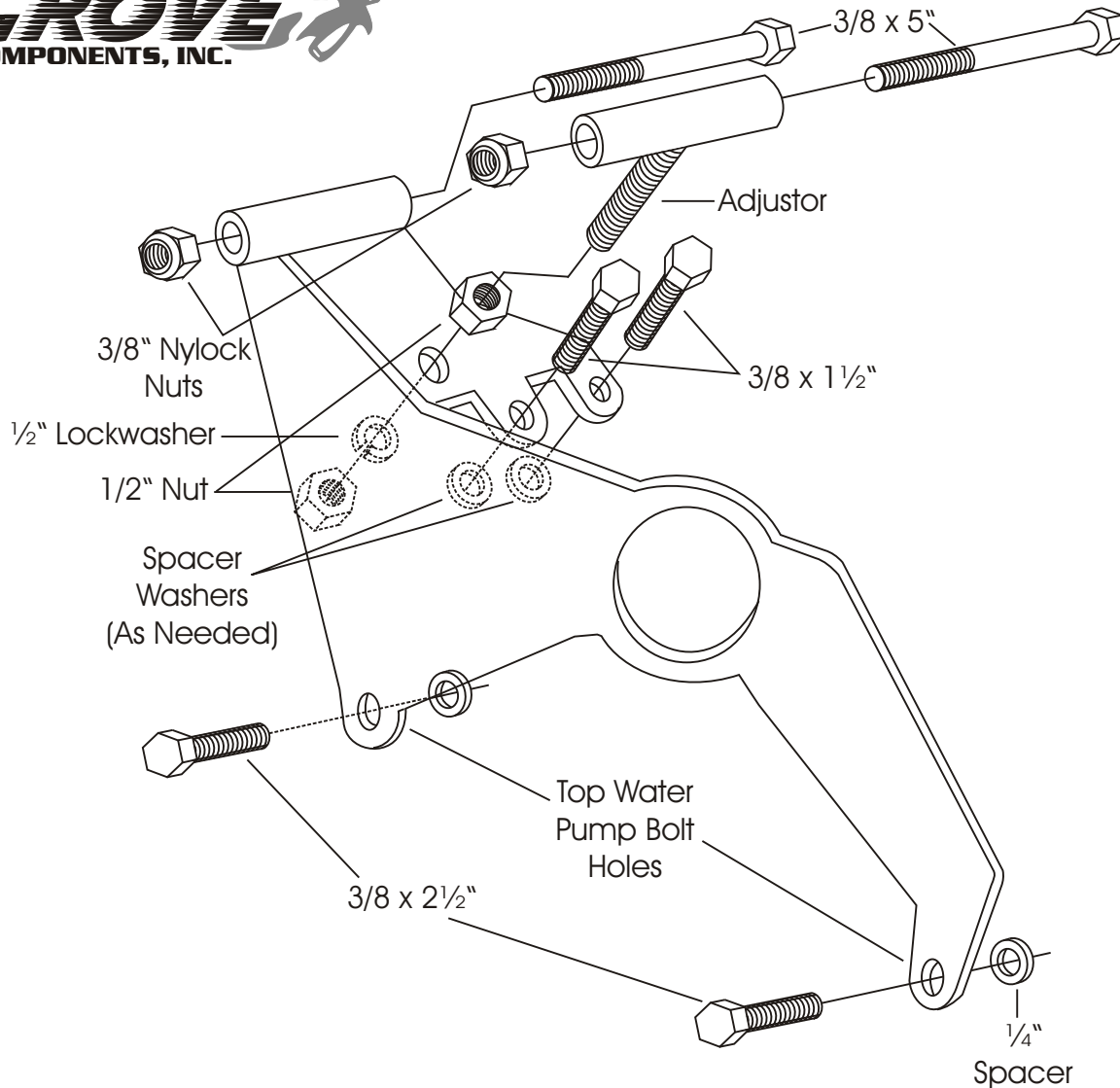




A.C. COMPRESSOR MOUNT 101R & 101L

Small Block Chevy - Long Water Pump



The Illustration shows 101R Bracket. All bolts, spacers, and hardware locations are the same for the 101L Bracket.

Note:

Install bolts into the water pump first. Then determine the number of spacer washers needed between the bracket and intake manifold. This will vary with the thickness of the various brands of manifolds. **START ALL MOUNTING BOLTS BEFORE TIGHTENING.**

We use a belt length of 54 to 55" with this mount on installations in our shop. However; this can vary with the diameter of your pulleys.

As with any part of this nature, make sure it fits your application before painting or plating. Parts that have been painted, plated, or modified may not be returned.

A.C.
COMPRESSOR
MOUNT
101R & 101L

Small Block Chevy - Long Water Pump

ALAN GROVE COMPONENTS, INC.
27070 METCALF ROAD
LOUISBURG, KS 66053